

# Tokyo Grain Exchange Inc.

## Monthly Report for January

2-Feb-12

### MONTHLY TRADING VOLUME

(Unit: contracts)

FUTURES	January-12	January-11	CHANGE(%)	December-11	CHANGE(%)
RICE	8,955	—	—	8,812	1.6%
CORN	34,650	138,103	-74.9%	41,536	-16.6%
SOYBEANS	33,210	163,509	-79.7%	43,672	-24.0%
NON-GMO SOYBEANS	624	1,412	-55.8%	40	1460.0%
AZUKI (RED BEANS)	8,410	13,711	-38.7%	7,071	18.9%
ARABICA COFFEE	516	4,695	-89.0%	532	-3.0%
ROBUSTA COFFEE	0	12	-	0	-
RAW SUGAR	3,570	28,131	-87.3%	2,938	21.5%
<b>TOTAL</b>	<b>89,935</b>	<b>349,573</b>	<b>-74.3%</b>	<b>104,601</b>	<b>-14.0%</b>

### OPEN INTEREST (MONTH-END)

(Unit: contracts)

FUTURES	31-Jan-12	31-Jan-11	CHANGE(%)	30-Dec-11	CHANGE(%)
RICE	5,195	—	—	4,556	14.0%
CORN	25,041	45,342	-44.8%	24,695	1.4%
SOYBEANS	21,279	54,430	-60.9%	25,580	-16.8%
NON-GMO SOYBEANS	109	734	-85.1%	712	-84.7%
AZUKI (RED BEANS)	3,408	3,915	-13.0%	2,719	25.3%
ARABICA COFFEE	386	1,537	-74.9%	621	-37.8%
ROBUSTA COFFEE	0	5	—	0	—
RAW SUGAR	2,123	12,841	-83.5%	4,822	-56.0%
<b>TOTAL</b>	<b>57,541</b>	<b>118,804</b>	<b>-51.6%</b>	<b>63,705</b>	<b>-9.7%</b>

### AVERAGE DAILY VOLUME

(Unit: contracts)

FUTURES	AVERAGE
RICE	471
CORN	1,824
SOYBEANS	1,748
NON-GMO SOYBEANS	33
AZUKI (RED BEANS)	442
ARABICA COFFEE	27
ROBUSTA COFFEE	0
RAW SUGAR	188
<b>TOTAL</b>	<b>4,733</b>

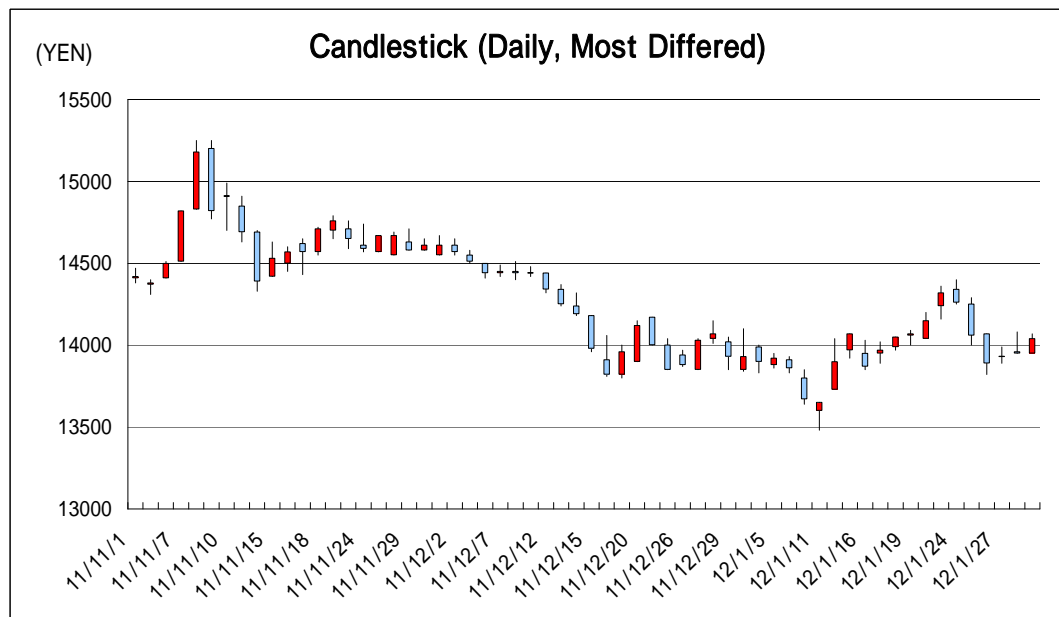
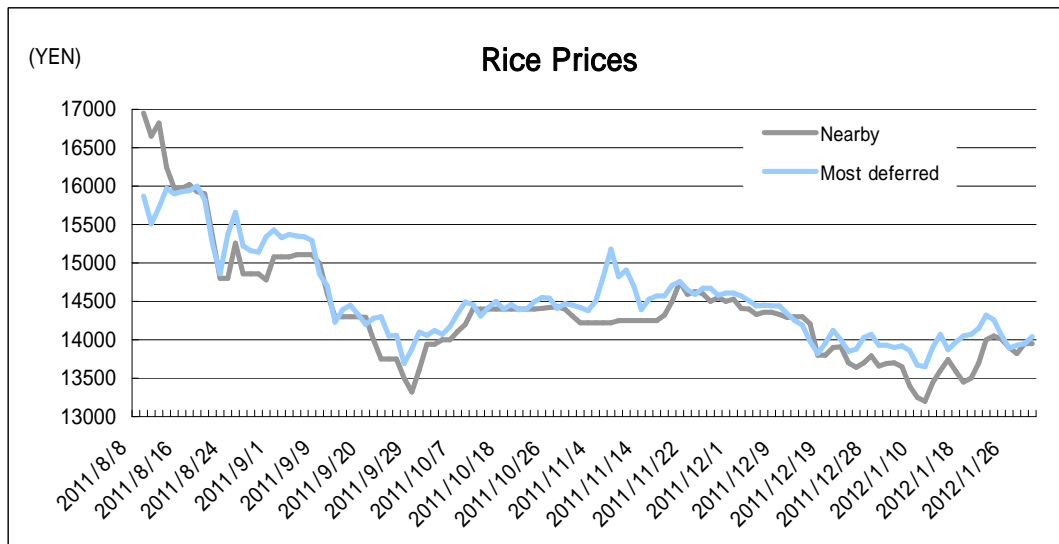
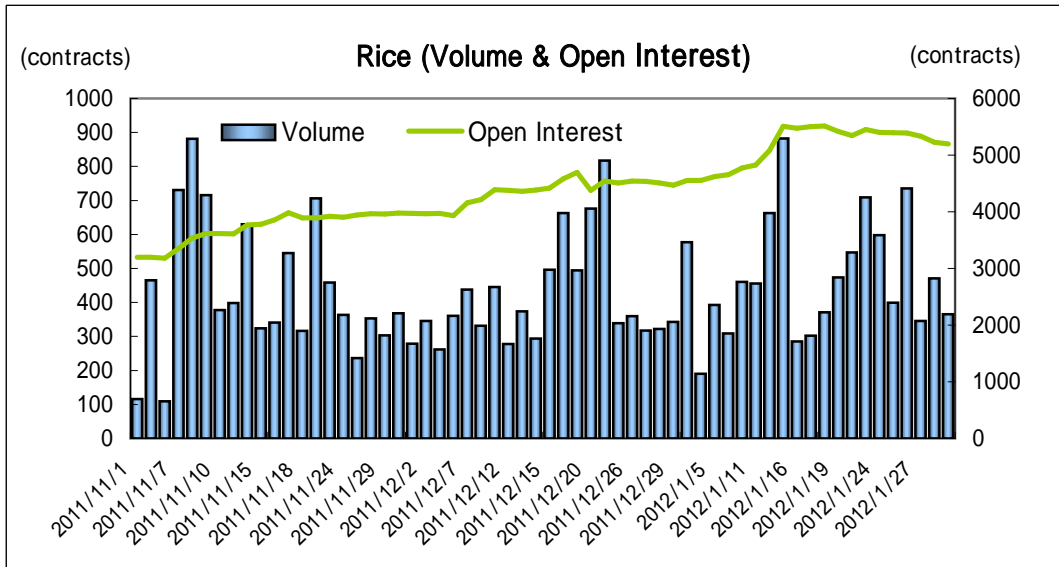
(Unit: contracts)

FUTURES	DELIVERIES
RICE	15
CORN	-
SOYBEANS	-
NON-GMO SOYBEANS	-
AZUKI (RED BEANS)	7
ARABICA COFFEE	1
ROBUSTA COFFEE	0
RAW SUGAR	0
<b>TOTAL</b>	<b>23</b>

<b>LARGEST DAILY VOLUME</b>	8,296	2012/1/5
<b>LOWEST DAILY VOLUME</b>	2,852	2012/1/24
<b>Trading Days</b>	19	

# Tokyo Grain Exchange Inc.

## Tokyo Rice Statistics



# Tokyo Grain Exchange Inc.

